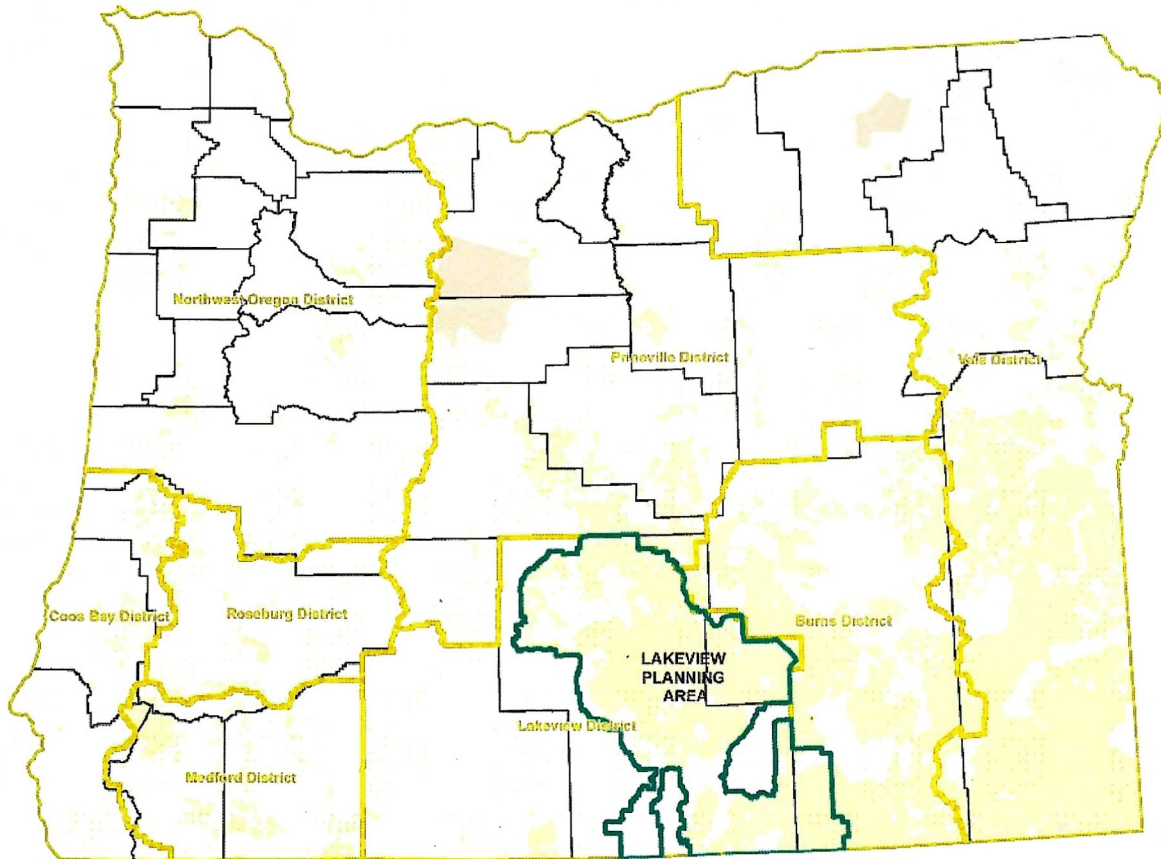


U.S. Department of the Interior
Bureau of Land Management

Draft Lakeview Resource Management Plan Amendment and Draft Environmental Impact Statement



Lakeview Planning Area

The Lakeview Field Office is located in south central Oregon. There are **3.2 million acres of public land** located in the planning area. The area is characterized by a basin and range topography with remote canyons as well as high desert and mountain systems.



Background / Purpose and Need

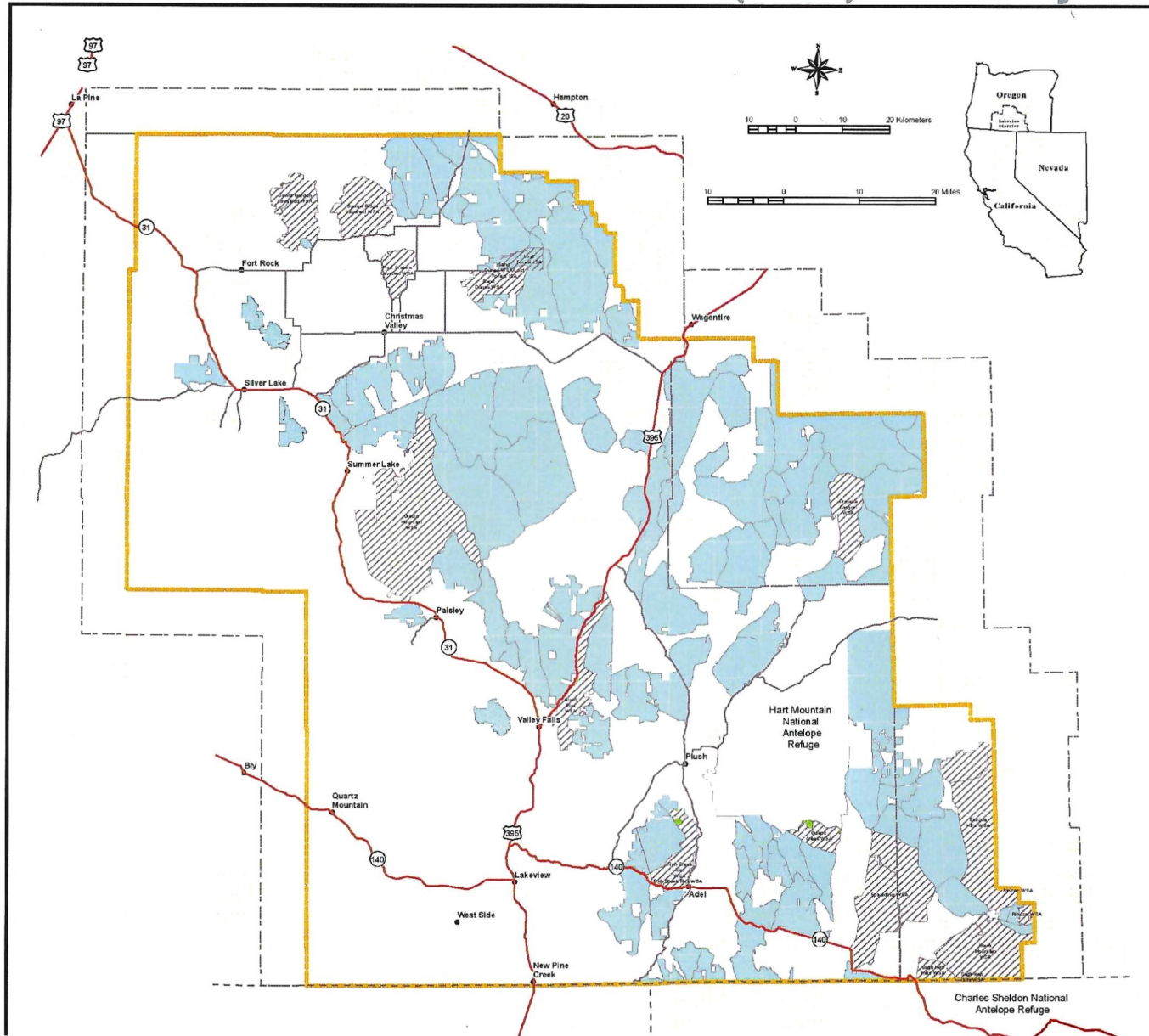
The RMP Amendment has a Narrow scope to comply with the 2010 SA by:

1. Determining how Lands with Wilderness Character units will be managed;
2. Addressing a full range of alternatives with respect to Off Highway Vehicle use; and,
3. Considering the reduction of grazing when:
 - A grazing permit is voluntary relinquished
 - Standards for Rangeland Health are not achieved due to current livestock grazing





Lands With Wilderness Characteristics (LWC) Inventory Results





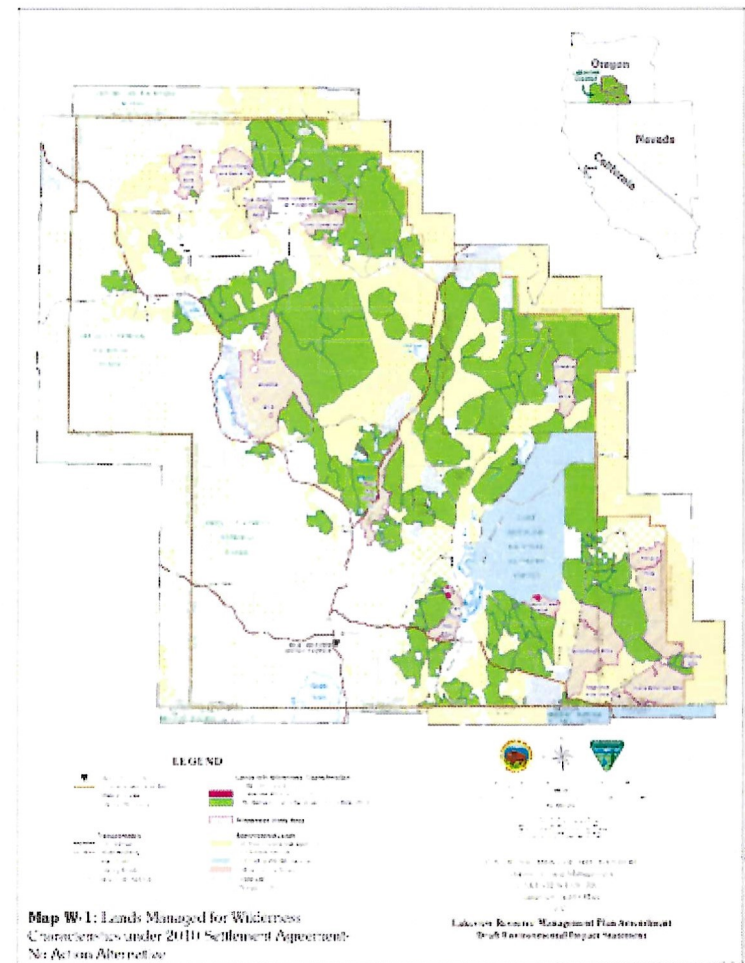
No Action Alternative

Continue under the 2003 Lakeview RMP/ROD, as amended by the 2015 Greater Sage-grouse RMP Amendment.

- Continue to manage the 106 inventory units (1,654,103 acres) as required by the 2010 SA, under which the BLM cannot authorize actions that would:
 - 1) diminish the size of an inventory unit or
 - 2) cause the unit to no longer meet the criteria for wilderness characteristics.
- Continue existing OHV allocations and livestock grazing management direction.

No Action

106 areas protected under SA (green)





Wilderness Characteristics Management Categories Alternatives B-E

Category A (Don't Protect) : Prioritize Other Multiple Uses

No protection measures specifically for Wilderness Characteristics

Category B (Balance) : Balance LWC with Other Multiple Uses

Rights-of-Way avoidance

VRM Class III (if not already a higher class)

Best management practices

Category C (Protect) : Prioritize Protection of LWC

No new major rights-of-ways

Land Tenure Zone 1 – Retention

VRM Class II (if not already a higher class)

202 WSAs: Managed according to the WSA Manual

Right-of-Way exclusion

Land Tenure Zone 1

VRM Class I

Closed to Leasable / Salable Minerals



Alternative C (Preferred Alternative) Summary

Wilderness Characteristics:

- Protect (Category C): 26 whole units & portions of 4 units (411,033 acres)
- Balance (Category B): 71 whole units & portions of 2 units (1,161,199 acres)
- Don't Protect (Category A): remaining 5 whole units & portions of 3 units (74,529 acres)

OHV:

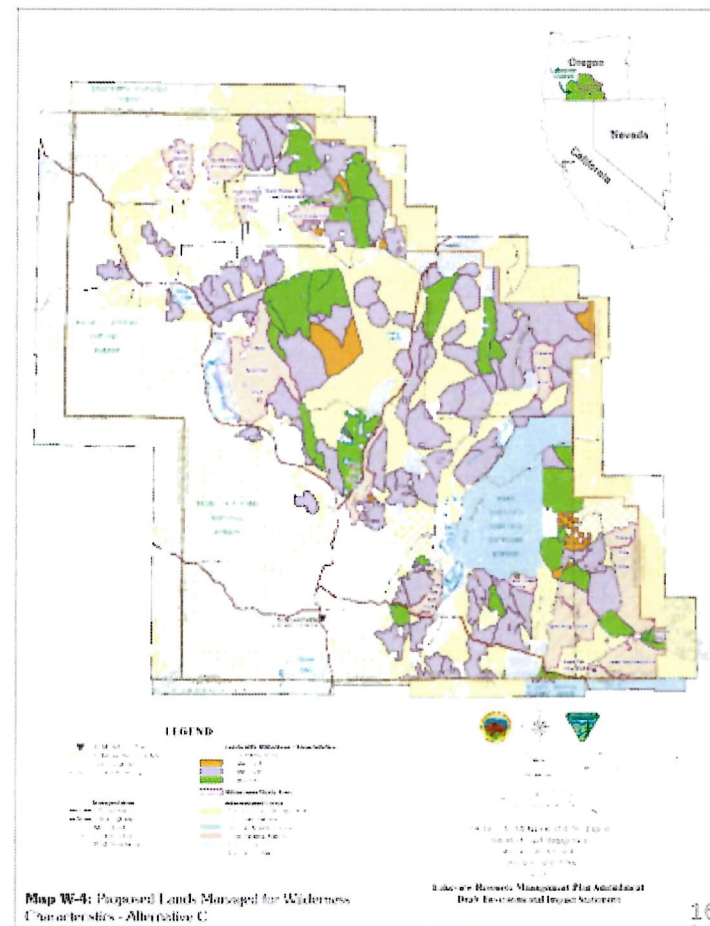
- OHV use limited to existing routes across planning area, including all wilderness characteristics units.

Grazing:

- Grazing allocations are not changed
- If pasture or allotment is not meeting RH Standards due to grazing, then grazing is removed until standards are met or making significant progress.
- If a permit is voluntarily relinquished within a WSA, grazing in that area would be reduced or eliminated for the life of the plan amendment.

Alternative C - Preferred

- 26 and 4 partial areas protected (Cat C) (green)
- 71 and 2 partial balance (Cat B) (purple)
- 5 and 3 partial not-protected (Cat A) (orange)





Alternative D Summary

Wilderness Characteristics:

- Protect (Category C): 2 whole units as Category C (4,671 acres)
- Balance (Category B): 41 whole units & portions of 18 units (1,066,919 acres)
- Don't Protect (Category A): remaining 45 whole units & portions of 18 units (582,355 acres)

OHV:

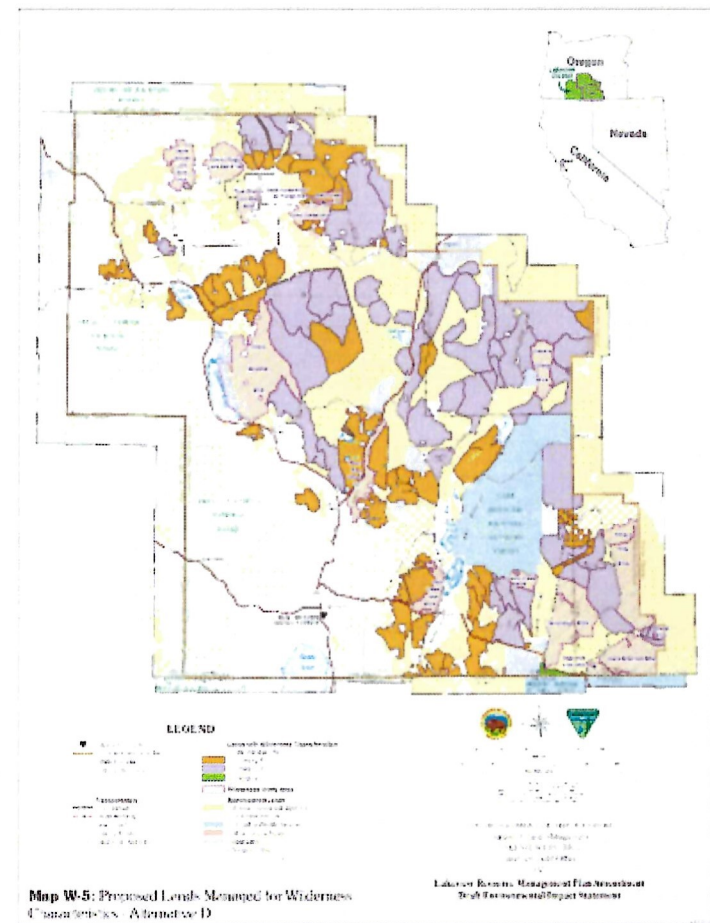
- Most of planning area would be limited to existing or designated routes.
- OHV open on 70,573 acres, including the Christmas Valley Sand Dunes.

Grazing:

- Most grazing management would be same as No Action.
- If a RH assessment determines one or more standards are not being met due to factors other than grazing, the authorized officer shall consider taking action, including changes in grazing, to make progress toward RH standards and land use plan objectives.

Alternative D—

- 2 areas protected (Cat C) (green)
- 41 units and 18 partial balance (Cat B) (purple)
- 45 units and 18 partial not protected (Cat A) (orange)





Alternative E Summary

Wilderness Characteristics:

- Protect (Category C): 26 whole units (372,218 acres)
- Balance (Category B): 68 whole units (1,109,160 acres)
- Don't Protect (Category A): remaining 12 whole units (168,512 acres)

OHV:

- 26 Category C units would be limited to existing routes
- No changes in the rest of the planning area.

Grazing:

- No changes (same as No Action Alternative)

Alternative E – RAC Input

- 26 protected (Cat C) (green)
- 68 balance (Cat B) (purple)
- 12 not protected (Cat A) (orange)

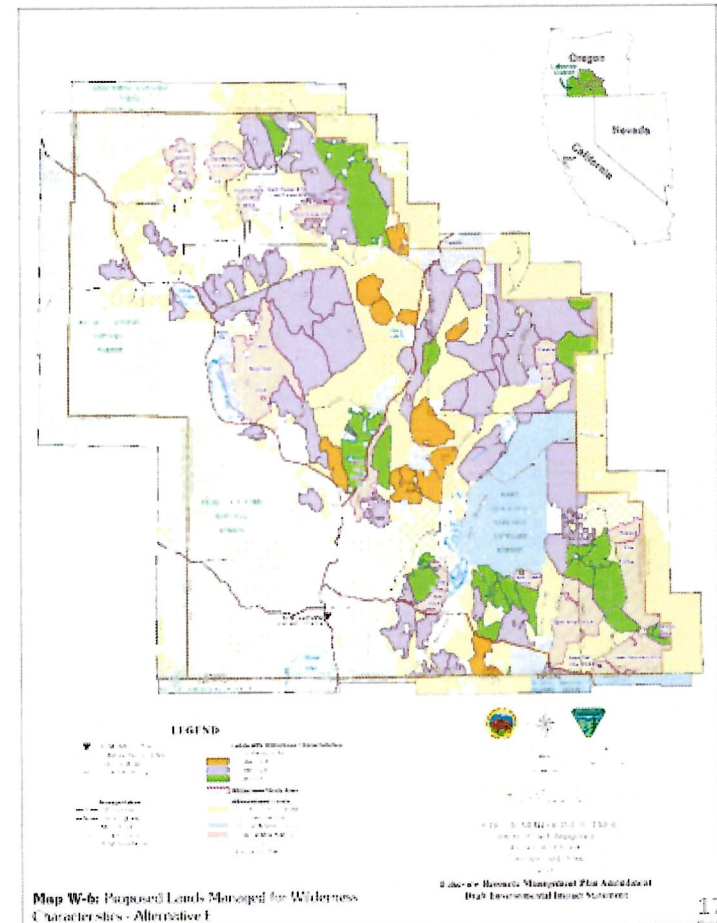




Table 3-2 Wilderness Characteristics Allocations by Alternative

Management Objective	No Action	Alternative A	Alternative B**	Alternative C	Alternative D	Alternative E
Units managed under the Settlement Agreement	106 units (1,654,103 acres)	0	0	0	0	0
Units managed as new 202 WSAs*	0	0	34 units and portions of 2 units (273,705 acres)	0	0	0
Units managed under new objective to protect wilderness characteristics (Category C)	0	0	77 units & portions of 2 (1,381,142 acres)	26 units & parts of 4 (411,033 acres)	2 units (4,671 acres)	26 units (372,218 acres)
Units managed under new objective to balance wilderness characteristics with other multiple uses (Category B)	0	0	0	71 units & parts of 2 (1,161,199 acres)	41 units & parts of 18 (1,066,919 acres)	68 units (1,109,160 acres)
No new objective for wilderness characteristics (Category A)	0	0	0	5 units & parts of 3 (74,529 acres)	45 units & parts of 18 (582,355 acres)	12 units (168,512 acres)
Category C setbacks***	0	0	0	7,276 acres	166 acres	4,211 acres

* This table does not include existing WSAs, which are addressed separately in the Wilderness Study Areas section.

** Alternative B includes both the 106 Wilderness Character units (1,654,103 acres) identified during this planning effort and 7 existing units (1,187 acres) that were previously identified during the development of the *Lakeview RMP/ROD* (BLM 2001a, 2003b).

*** Under Alternatives C, D, and E, the BLM would designate setbacks from the boundaries of Category C units. These setbacks would provide management flexibility to adapt to other resource needs, threats, and opportunities along the unit boundaries of the unit. Wilderness characteristics within the setbacks could be substantially reduced or eliminated so their acreage is not included in the Category C unit totals in this table.



OHV Area Designations by Alternative

	No Action / Alt A	Alt B	Alt C	Alt D	Alt E
Open	476,174	252,569	0	70,573	466,798
Limited - Designated	384,930	125,764	384,193	384,193	384,193
Limited – Existing	2,339,555	681,928	2,807,904	2,737,306	2,341,105
Closed	10,809	2,143,923	11,285	11,285	11,285





Livestock Grazing Changes by Alternative

	No Action / Alt A	Alt B	Alt C	Alt D	Alt E
Areas not Meeting Standards for Rangeland Health Due to Livestock	No Change	Suspended for the life of the plan in Pasture / Allotment	Temporarily removed until meeting standards or making significant progress toward meeting standards	No Change - in areas where Livestock is a causal factor.	No Change
Voluntary Permit Relinquishment	No Change	Remove Grazing for the Life of the Plan in LWC, WSA, ACEC, RNA, and Crit. ESA	Remove Grazing for the Life of the Plan in WSA.	No Change	No Change





Next Steps – What Happens Now?

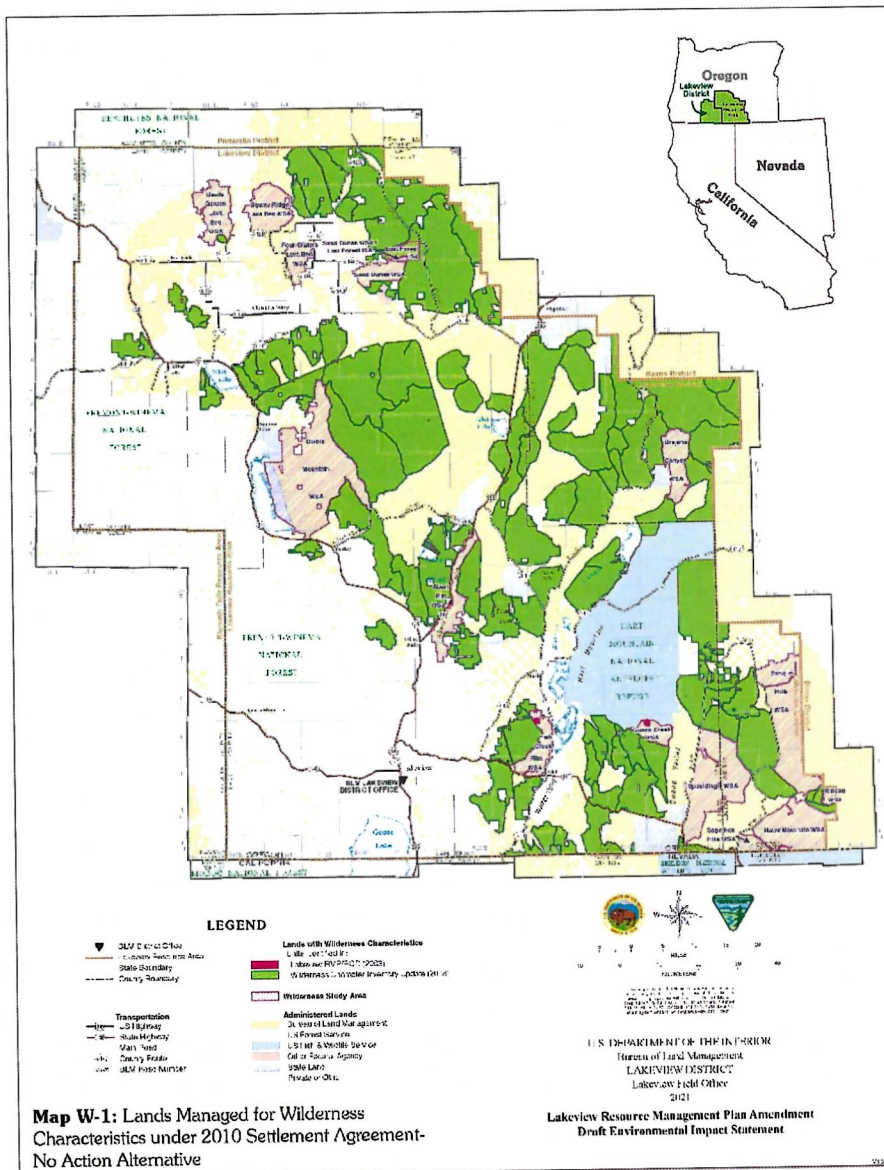
- **90 Day Public Comment Period (June 7 – Sept.5)**
- **Public Meetings (July 15 - 22)**
- **Proposed RMP / Final EIS**
- **Governor's Review Period / Protest Period**
- **Record of Decision**





No Action

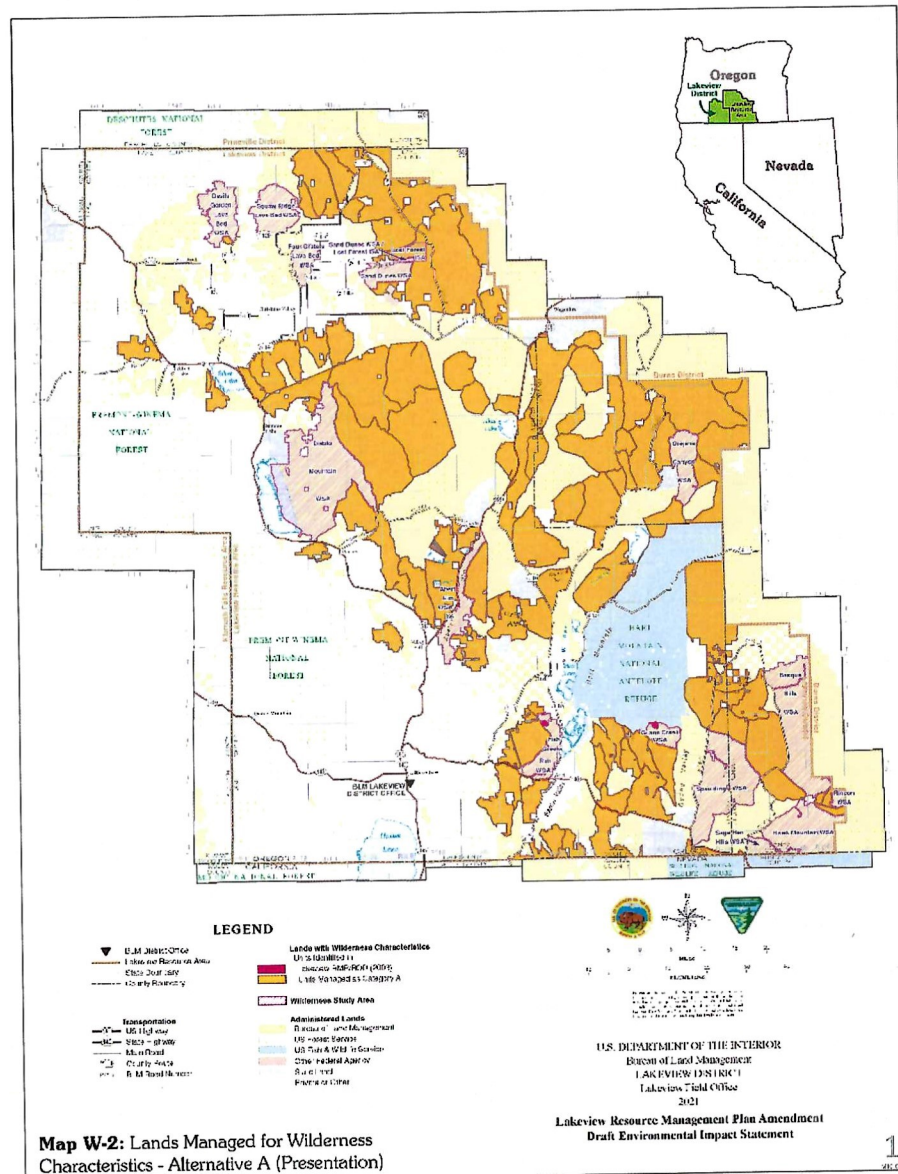
106 areas protected under SA (green)



Map W-1: Lands Managed for Wilderness Characteristics under 2010 Settlement Agreement - No Action Alternative

Alternative A

106 areas managed for other multiple uses (orange)

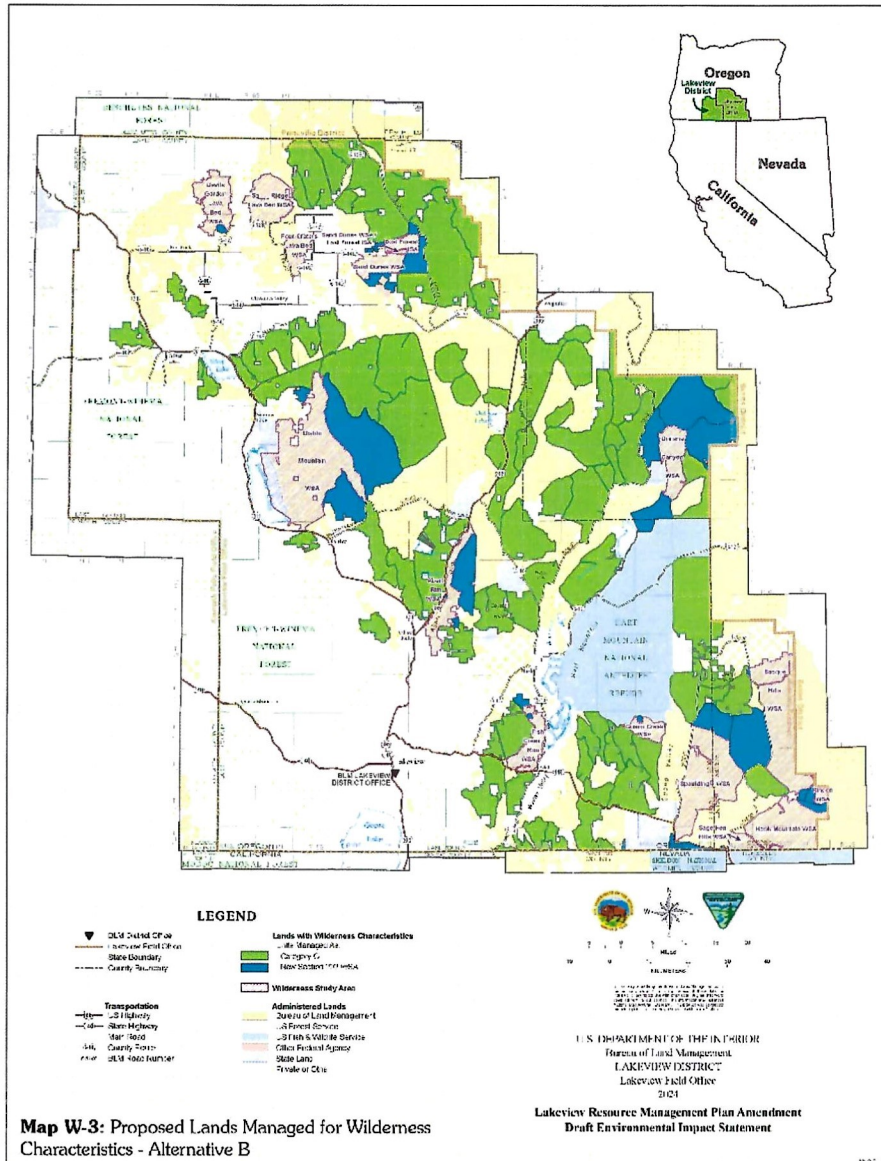


Map W-2: Lands Managed for Wilderness Characteristics - Alternative A (Presentation)



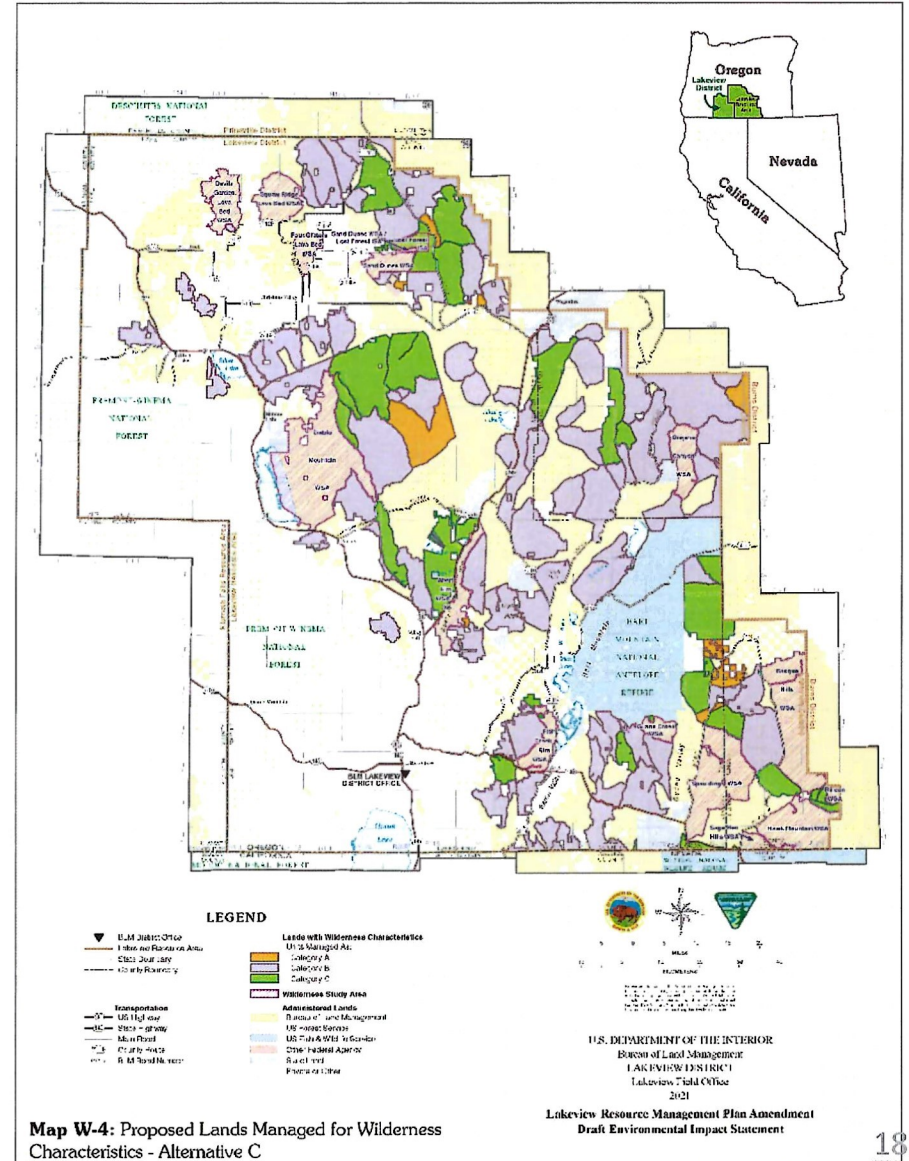
Alternative B

106 areas protected: 34 & 2 partial WSA (blue)
77 & 2 partial Cat. C (green)



Alternative C - Preferred

26 and 4 partial areas protected (Cat C) (green)
71 and 2 partial balance (Cat B) (purple)
5 and 3 partial not-protected (Cat A) (orange)





Alternative D—

2 areas protected (Cat C) (green)

41 units and 18 partial balance (Cat B) (purple)

45 units and 18 partial not protected (Cat A) (orange)

Alternative E – RAC Input

26 protected (Cat C) (green)

68 balance (Cat B) (purple)

12 not protected (Cat A) (orange)

